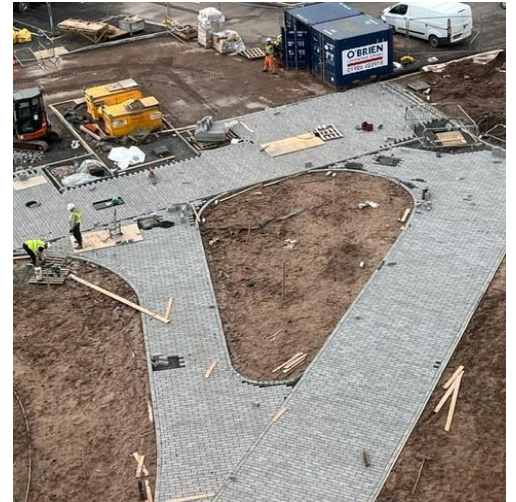


SPACERS FOR PERMEABLE PAVING

## PERMEABLE PAVING CASE STUDY

**Project Name:** Birmingham Health Innovation Campus  
**Client:** University of Birmingham  
**Contractor:** O'Brien Contractors Ltd  
**Project Area:** 1500m<sup>2</sup>  
**Products Used:** Hardscape Hydro Lineo Pavers  
100 x 300  
**Date:** February 2024



### The Site

The BHIC aim is to align with the broader life sciences expertise and infrastructure across the West Midlands and help establish Birmingham as a leading economic hub for life sciences. The development of the park will afford the industry greater access to leading research and facilities, investment prospects and the opportunity to develop their own facility spaces.

### The Challenge

To create an ethical permeable paved pedestrian and cycle paths throughout the campus.

### The Solution

SuDSFLOW spacers were specified to create new permeable paved areas throughout the campus. By using this unique product, a 10mm joint width was created between the pavers to allow free draining voids. This system allows rainwater to infiltrate directly into the sub-grade.

### Benefits

- Accepts rainwater permeation over the entire area of use
- Specification no longer restricted to purpose made permeable block pavers
- Controlled water discharge
- Designed to allow rainwater to flow through the paving joints rather than drain off
- SuDSFLOW spacers carry a 25-year guarantee

